

Xavier Loup

A TRUE ARTISTIC DIRECTION

LANDSCAPE ARCHITECTURE



PRIVATE GARDEN

Landscape Designer

Uccle, Belgium

1 500 m²



XAVIER LOUP

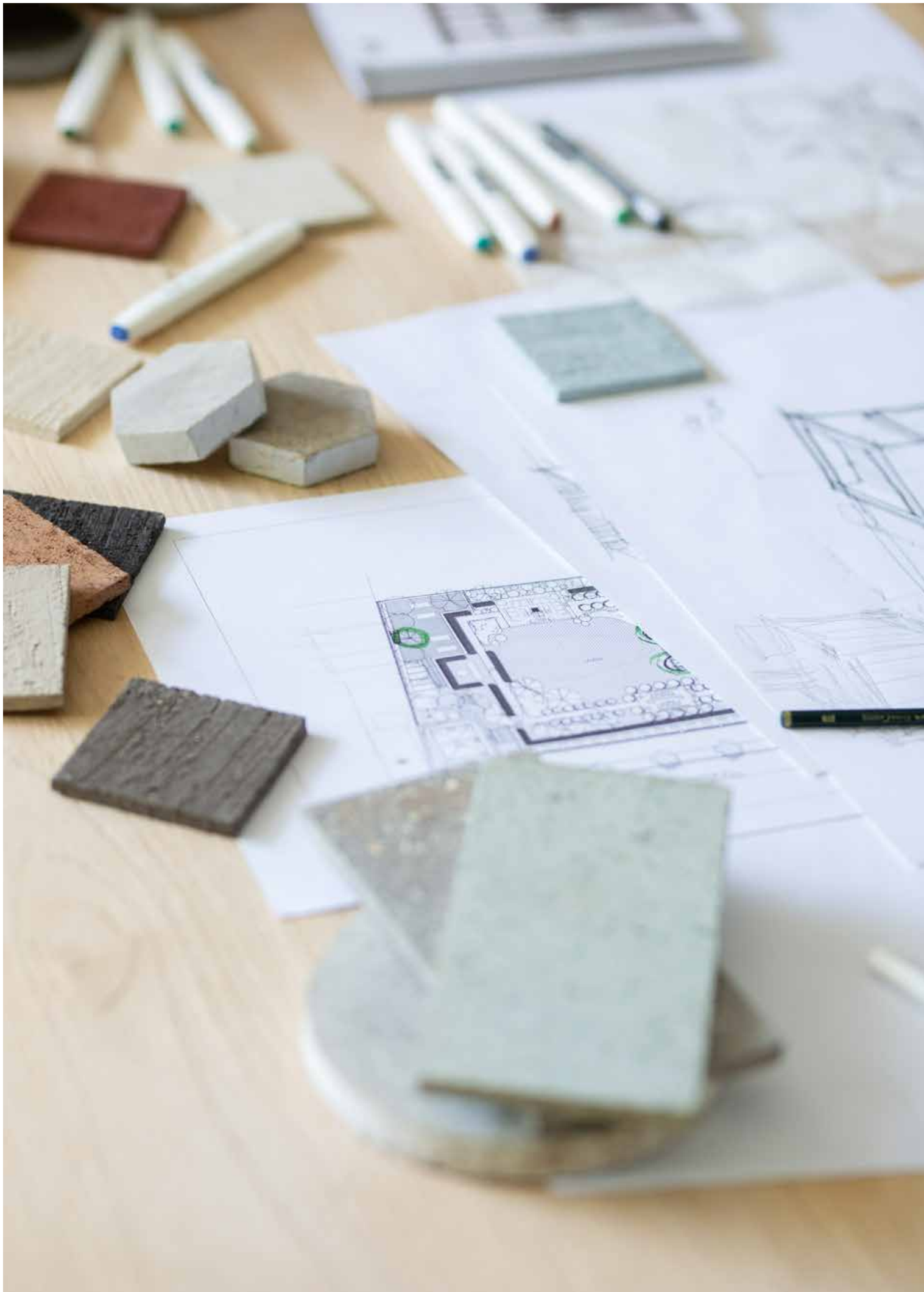
A FRENCH TOUCH COMPLEMENTED BY ORIENTAL
SUBTLITIES, HIGHLIGHTED BY SCANDINAVIAN AND
CALIFORNIAN NOTES

Xavier Loup's style is unique, accompanied by the cicada's song in the shade of whispering pines from his childhood in Provence, nourished by the beauty of Paris during his school years, and ripened by an early career in California. Countless travels and encounters subsequently enriched and forged his solid sense of aesthetics.

His style infused with many gastronomic and artistic references and experiences, steeped in the worlds of music, fashion, perfumes, coupled with perfect technical mastery of his trade, his sensitivity and his personal philosophy of outdoor spaces, lends a unique flavor to every project he directs, and seduces with refinement enhanced by exotic and modern touches.



Art Director (Xavier Loup) during workshop seance.



Project Workshop : Material selection phase



OUTDOOR LUXURY creative studio

ARTISTIC DIRECTOR

FORM AND FUNCTION ARE INSEPARABLE

Any place must provide a quality personal experience in all circumstances, regardless of its size - a 2,500-room hotel, a family home of any type, a cruise ship or a shopping mall, no matter how many people will use it. This dictates two conditions: the place must incorporate a landscape, and there must be a consistency in all components.

The landscape style is determined by the style of the indoor space, the pre-existing outdoor conditions and how the space will be used. The entire project must follow the same direction. This artistic direction infuses all stakeholders with its vision.



- ↑ Mood board for a project in progress
Uluwatu beach club Project 2020 Indonesia.
- A few projects case studies and presentations.
- ↓ Creative details from a presentation.



IDEA DEVELOPMENT

EMQUARTIER MALL

City Bangkok - Thailand
Corporate Client : Group Mall
Best Mall Award 2015

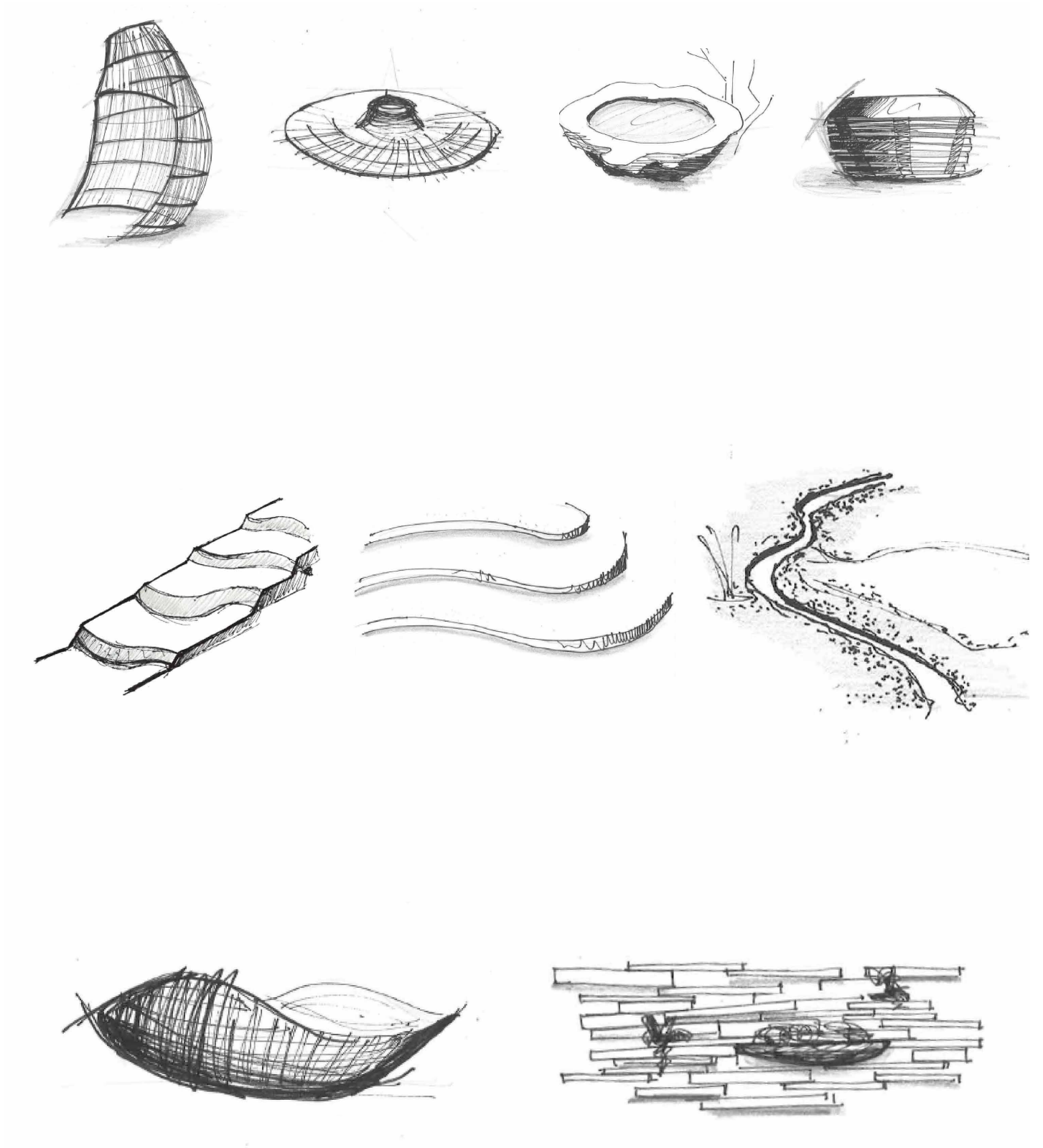
Art Director & Landscape Designer for
Emquartier development



Development of an idea around curves: visiting this urban mall will be a whole experience, in this space people will be able to relax, rediscover the nature, the sound of the water, the freshness of a waterfall or a pond. From curves such as rice paddies we have developed this garden suspended over two floors in the middle of a mall.



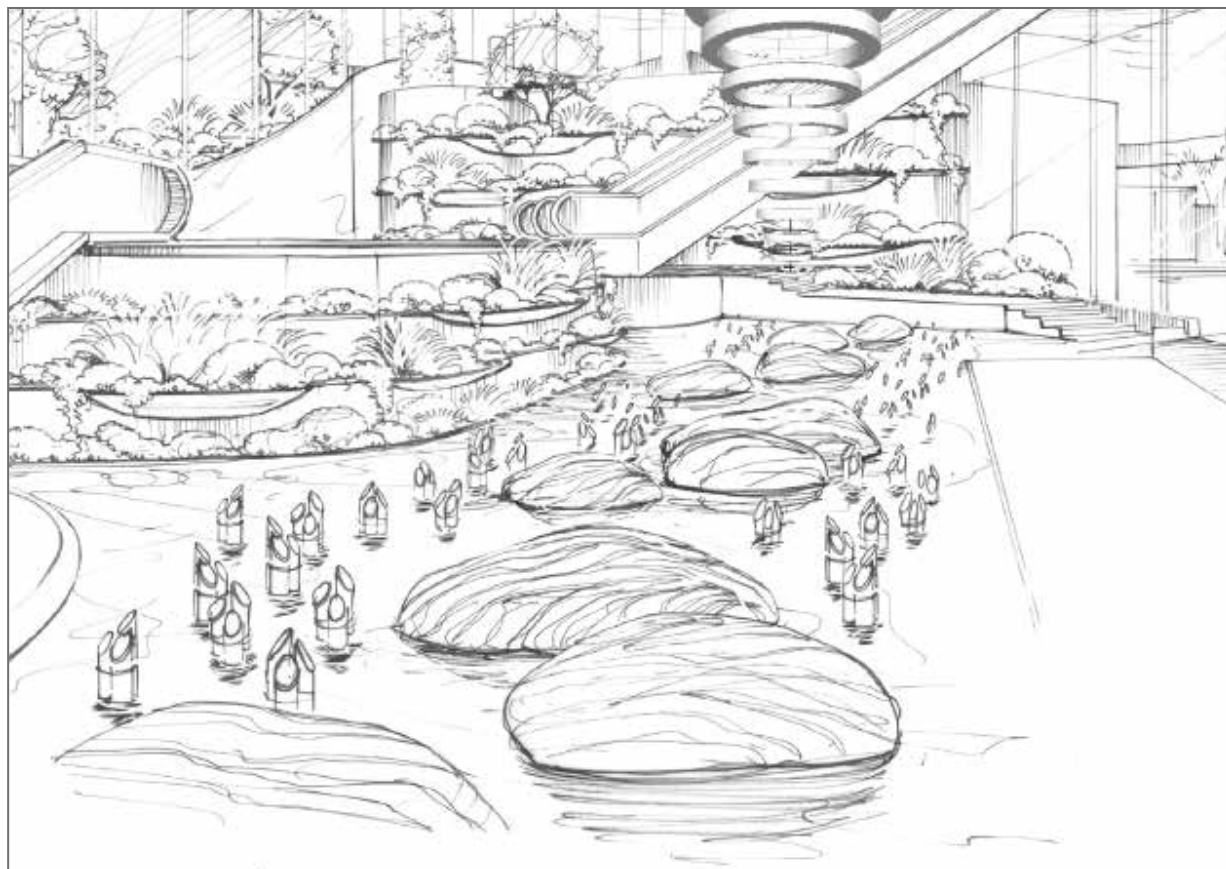
Modern treatment of a curved bassin nestled in vegetation.
Organic, biological shapes concept.



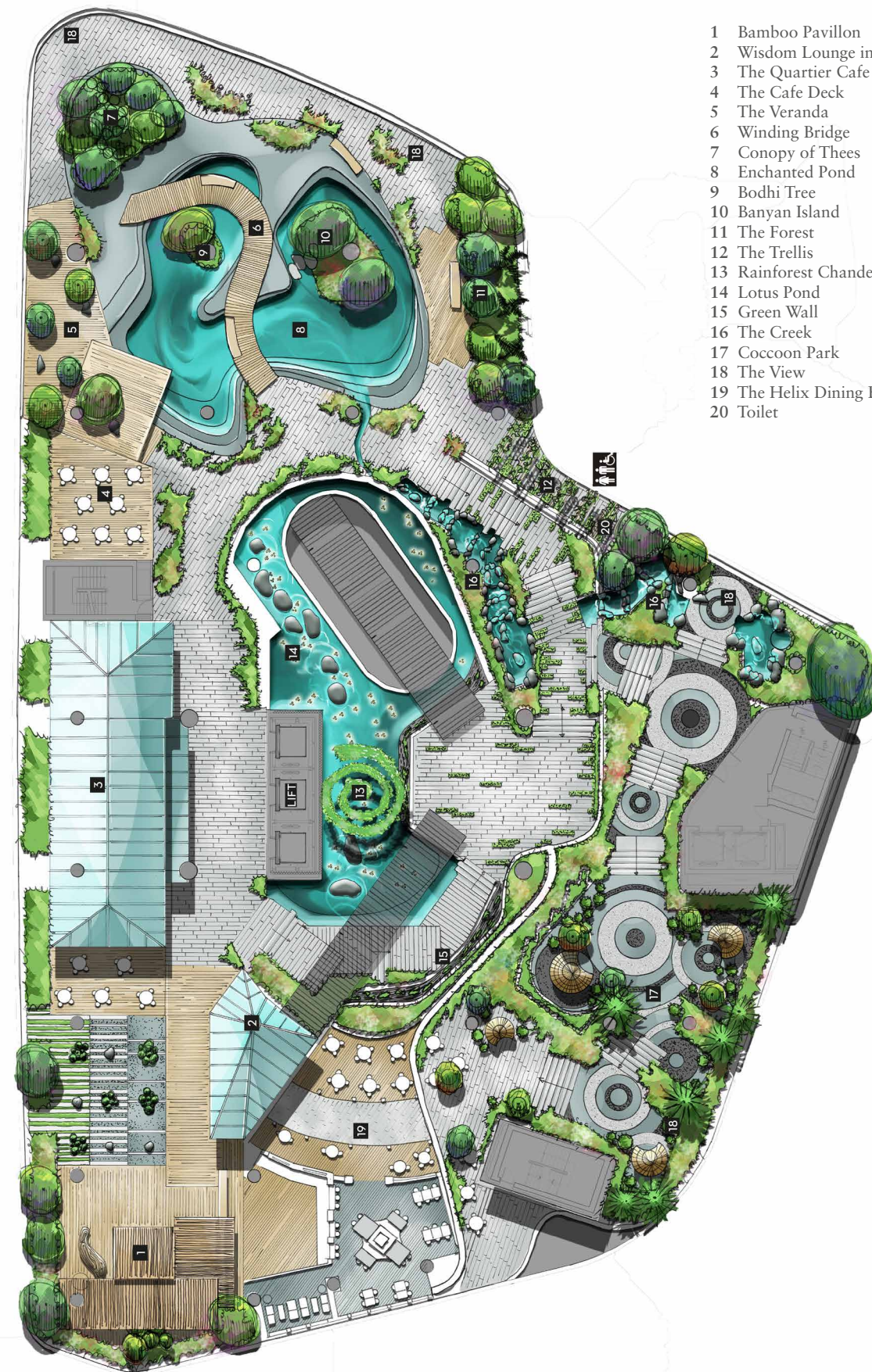
- ← Mood board of inspirations & researches allowing us to narrate a story to our client.
- ↑ Ideas being developed : starting with simple curves ideas towards creating art pieces and life places for the hanging garden.



The Terraces



The Central Pond



- 1 Bamboo Pavillon
- 2 Wisdom Lounge in the Garden
- 3 The Quartier Cafe
- 4 The Cafe Deck
- 5 The Veranda
- 6 Winding Bridge
- 7 Conopy of Thees
- 8 Enchanted Pond
- 9 Bodhi Tree
- 10 Banyan Island
- 11 The Forest
- 12 The Trellis
- 13 Rainforest Chandelier
- 14 Lotus Pond
- 15 Green Wall
- 16 The Creek
- 17 Cocoon Park
- 18 The View
- 19 The Helix Dining Extraordinaire
- 20 Toilet



River stone custom pots, found in the rivers of Indonesia.
Diameter 160 cm.

SELECTED WORKS

GREEN VILLA

Art Director & Landscape Designer
Bangkok, Thailand



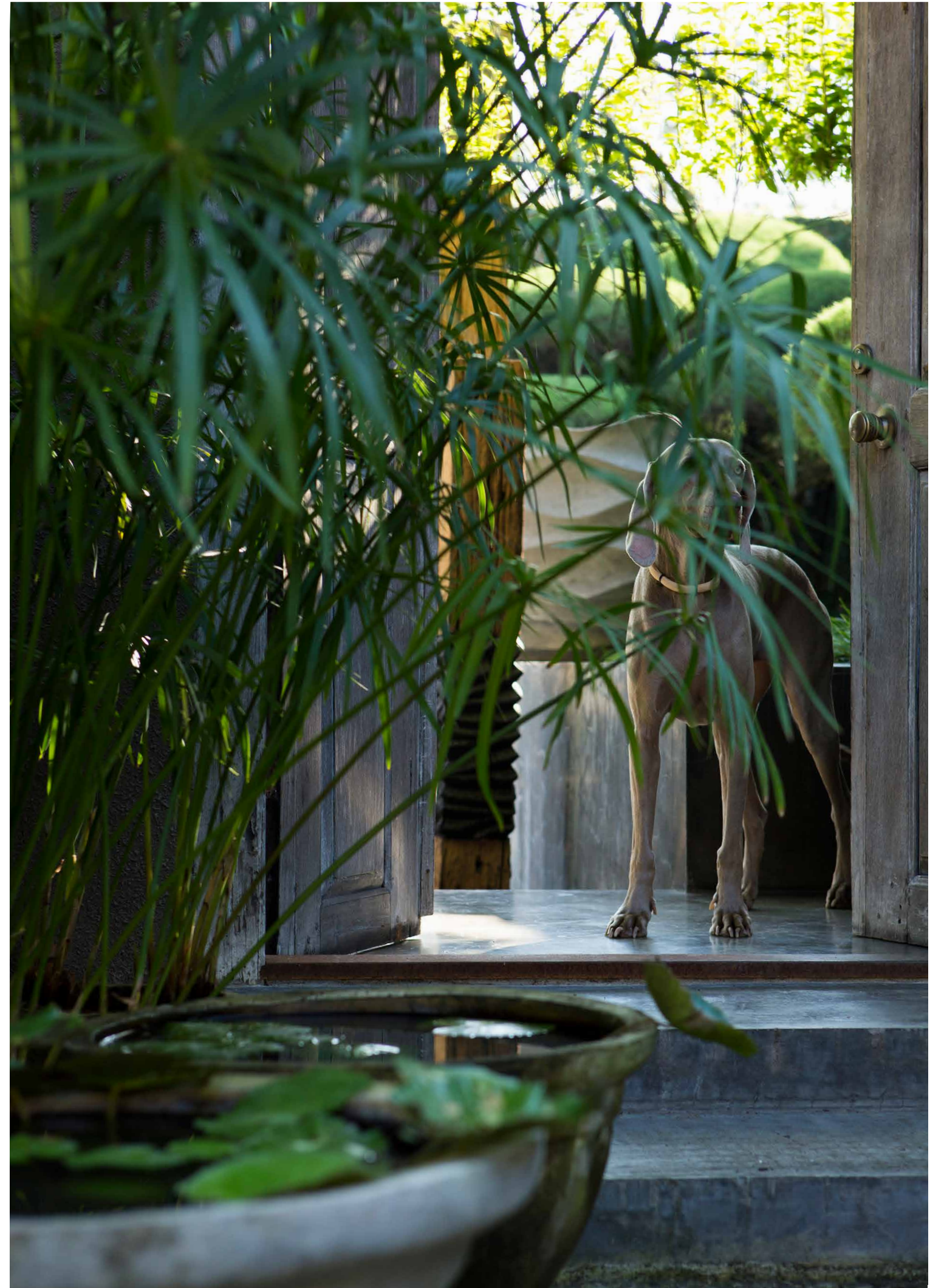
The entire universe of the project is based on the relationship between the vegetable material and the other materials, both indoors and outdoors. The two spheres complete each other to create a space rendered unique by this delicate balance. This being located in Asia, we chose to bring there a European dimension by designing the main garden as a large Spanish patio.

→ Mix of organic form with trees & our collection of pots in waves.





Potting for planting experiment and cactus collection.



Entrance to the villa structured with a collection of aquatic plants.

A TERRACE ABOVE PARIS

*Art Director
120 m² rooftop, creation of 4 real living spaces :
kitchen, outdoor lounge, fireplace, sunbathing*



PRIVATE MANSION LONDON

Art Director
180 m², patio garden with outdoor lounge,
outdoor SPA & iconic, graphic garden



IN MY UNIVERSE, SPACE IS THE BASIC ELEMENT
THE QUALITY OF THE SPACE, NOT ITS DIMENSIONS.

Xavier Loup

→ Gandia Blasco outdoor furniture
Collection Na Xemena Bespoke cushion.



GARDEN SEA

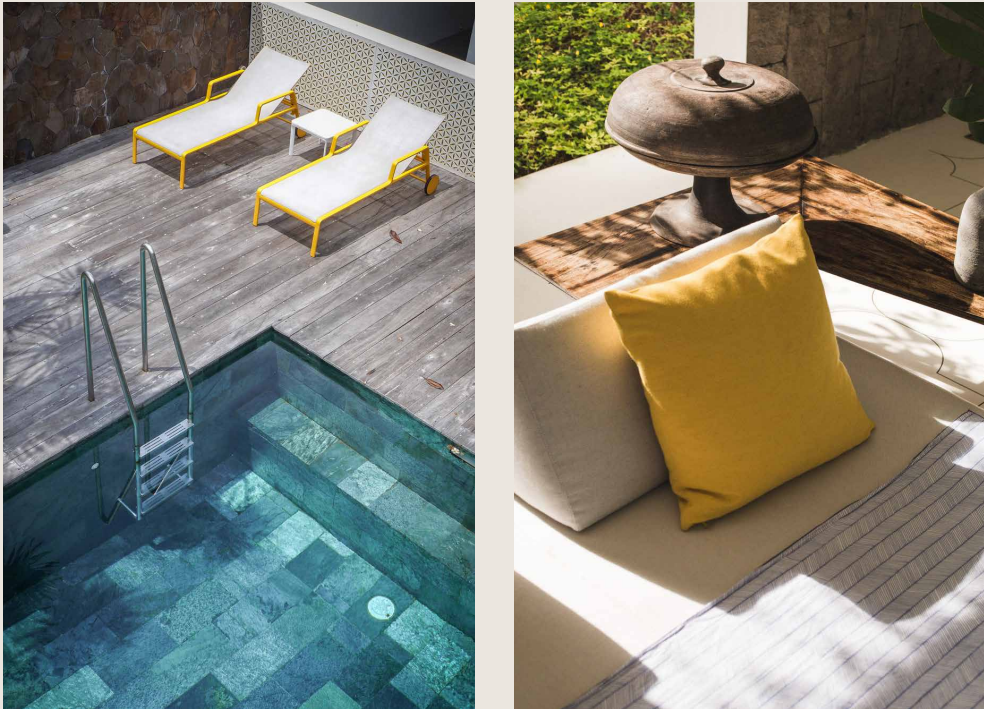
Art Director & Landscape Designer
Dubai, United Arab Emirates



Living space : outdoor lounge area connecting
to the outdoor kitchen.

VILLA 1880

Art Director & Landscape Designer
Bali, Indonesia
Outdoor, 1 200 m²



This is the result of a beautiful collaboration with the architect and owner of the house. From the genesis of the project, we had as an goal to bring two architectures together: a traditional house from Borneo island and modern architecture. The balance between building and garden is obtained through the use of specific materials, such as the large pots we created for this project with simple forms and wonderfully rendered patinas.

→ The swimming pool draw on mid-century design influences.
Contemporary daybeds Kettal 'Park Life'.





↑ Bespoke pots in clay with old patine finishing home made.
Plant combination with graphic shapes.

→ Work on light & Green interact the patio plants
& the Master bedroom.



PRIVATE GARDEN ENGLAND

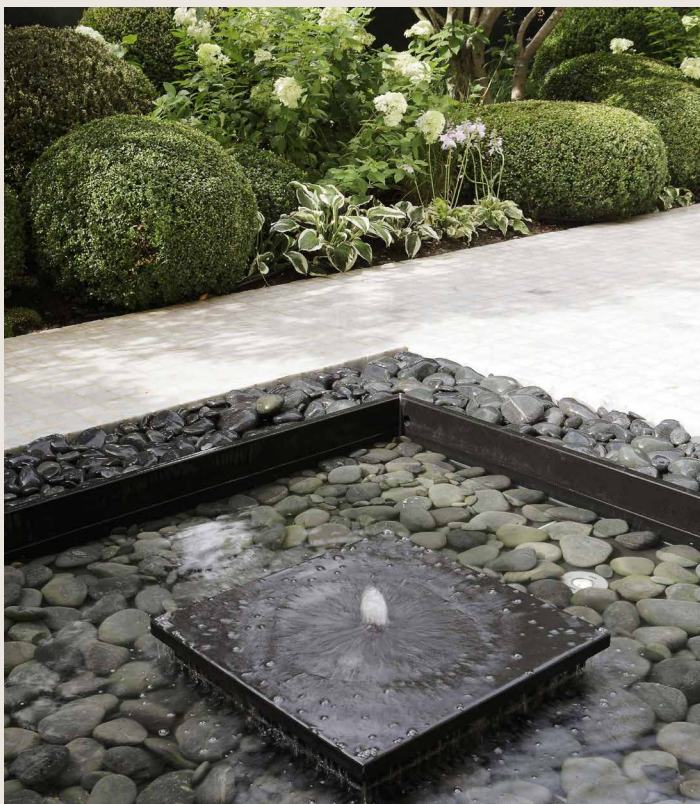
Art Director
England
1200 m²

Strict & organic line combination



PRIVATE GARDEN

Art Director & Landscape Designer
London, United Kingdom



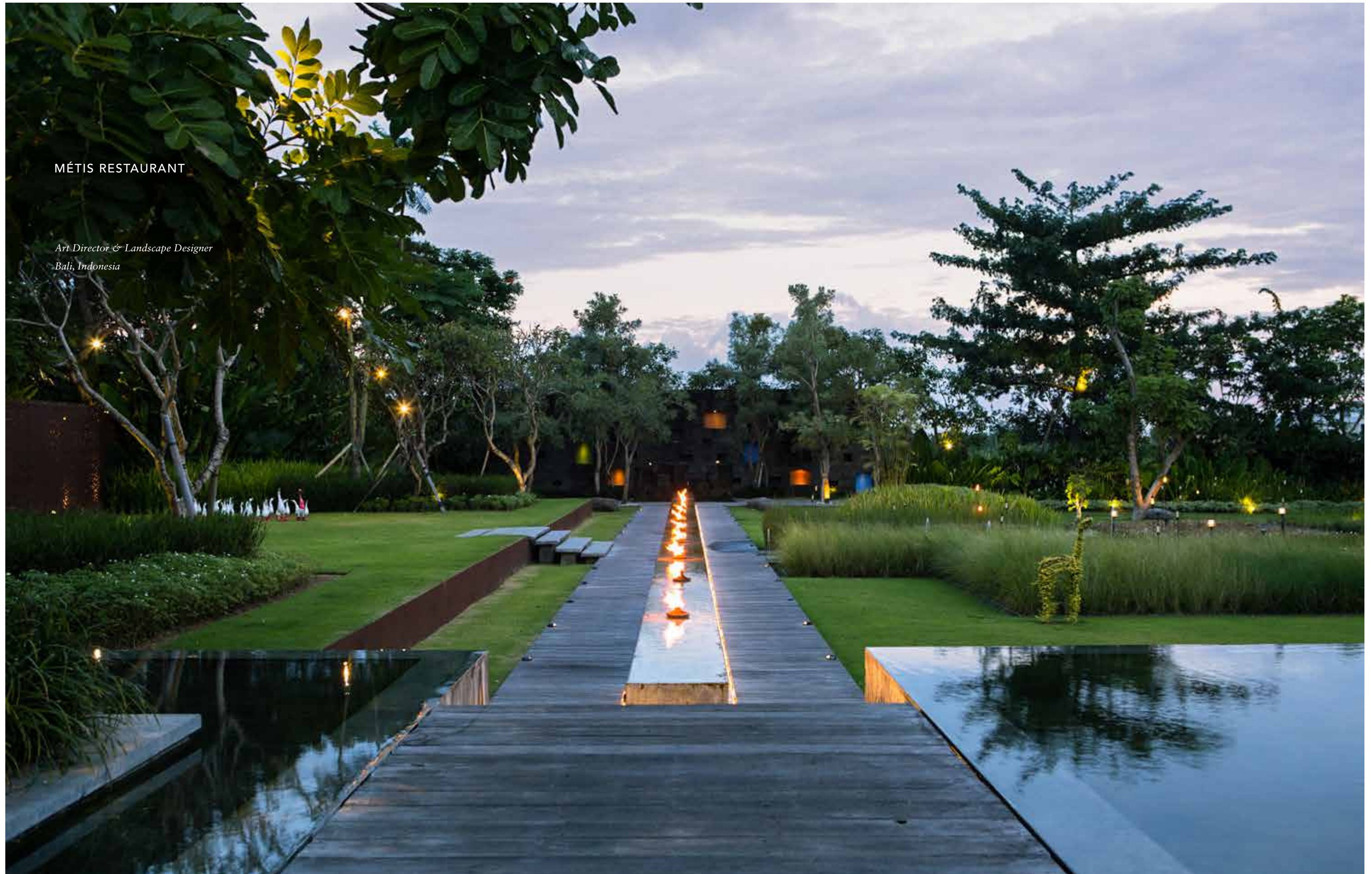
Patio garden overlooking the main living room of this mansion. An alternance of shapes and curves given by a spectacular boxwood structure and this very graphic black fountain settled on a white floor.

→ Fountain detail : custom made design & assembled in black granite from Zimbabwe.



MÉTIS RESTAURANT

Art Director & Landscape Designer
Bali, Indonesia



SHOWROOM HOUSE

*Art Director & Landscape Designer
Bruxelles, Belgium*



A place of mixed spaces, outdoors and indoors are intertwined. Art of Living displayed in the house area of the showroom.

- ↑ Texture mix between these concrete waves & the soft texture of these Helixine mosses.
- Pond & pool mirror treatment to give a dynamic to the outside.





Summer mix between Hydrangea & Japanese anemones.



Living space, cocoon protected with grasses Pennisetum, for a drink at sunset under a sail.

A young girl with dark, curly hair, wearing a purple dress with a white geometric pattern, is running barefoot across a lush green lawn. She is moving from left to right, slightly out of focus, suggesting motion. In the foreground, a modern garden pond is visible, featuring a low, light-colored stone or concrete border. The pond contains several tall, slender reeds that are partially submerged. The water in the pond is calm, reflecting the surrounding greenery. In the background, there are more plants, including a large, rounded bush and a cluster of white flowers. The overall scene is a peaceful and vibrant garden setting.

The garden
a place of life
a place of pleasure

SELECTED LIST OF WORKS

HOTEL & DEVELOPER GROUPS

FRANCE

Shangri-La Hotel, Paris
The Peninsula Paris
Park Hyatt Paris-Vendôme
Hotel Plaza Athénée, Paris
Hotel Raphael, Paris
Balthazar Hotel & Spa, Rennes
Terrass Hotel, Paris
Hotel Amarante, Paris
Hotel d’Aubusson, Paris
Novotel Paris Les Halles
Hotel Regina, Paris
Hotel Jardin du Marais, Paris
Grand Hotel Dijon La Cloche

HOLLAND

Hotel Sofitel Legend The Grand, Amsterdam
Conservatorium Hotel Amsterdam

INDIA

The Oberoi, New Delhi

INDONESIA

Intiland Grande Surabaya
Métis Restaurant Bali
Hydrogen
Padma Group

MOROCCO

Le Meridien N’Fis Marrakech
Eagle Hills Tamuda Bay
Les Terre M’Barka Marrakech
Beldi Country Club Marrakech

SINGAPORE

JW Marriott Hotel Singapore South Beach

SPAIN

Mandarin Oriental, Barcelona

THAILAND

The EmQuartier Mall, Bangkok
Kayana Villa, Koh Samui

UAE

Dubai Golf City

USA

Palm Springs Resort, Hyatt Regency
Indian Wells, California
Luxury Santa Monica Beach Hotel
Fairmont Miramar, California

DESIGNERS & ARCHITECTS COLLABORATION

Boiffils

Bruno Erpicum
Christian Liaigre
Daniel Bismut
Helene & Olivier Lempereur
Jacques Van Haren
Jean Marie Massaud
Jean-Philippe Nuel
Joseph Karam
Kelly Hoppen
Lemmi Tan Tik Lam
Marc Corbiau
Noé Duchaufour-Lawrance
Olivier Dwek
Paola Navone
Patricia Urquiola

Philippe Barles

Philippe Starck
Reda Amalou
Sarah Poniatowski Lavoine
Stephane Parmentier
Sybille de Margerie
Vincent Van Duysen

Xavier Loup

A TRUE ARTISTIC DIRECTION

PARIS
LONDON
SINGAPORE
LOS ANGELES
SAIGON
SINCE 1995

customer@xavierloupstudio.com
xavierloupstudio.com

OUTDOOR LUXURY PTE.LTD
138 Cecil Street Cecil Court, 18th Floor
Singapore 069538
UEN. 201736576H